

Zedfy WLED Controller

Steuere deine adressierbaren LED-Stripes mit unserem neuen WLED Controller. Über 100 Lichteffekte und 50 Farbpaletten ermöglichen es dir, genau das richtige Lichtbild zu erstellen. Durch die vorinstallierte Open-Source-Software WLED, kannst du diesen Controller problemlos in dein Smarthome integrieren oder ganz einfach über die Android / iOS App mit deinem Smartphone steuern.



Der Zedfy WLED Controller kann folgenden LED Typen steuern

SK6812 (RGBW), WS2811, WS2812B, WS2813, APA102, LPD8806, WS2801, SK9822, GS8208, TM1814, WS2815

Technische Daten

Versorgungsspannung:	4.7 V bis 24.3 V
Umgebungstemperatur Betrieb:	+5°C ... +35 °C
WiFi Standard:	IEEE 802.11 b/g/n, 2.4 GHz
Antenne:	integrierte Leiterplatten-Antenne 3.7 dBi
Gewicht:	29.2 g
Abmessung:	78x46.5x22 mm
App-Steuerung:	WLED Native

Zubehör



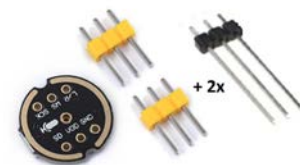
Programmer

Ethernet Adapter



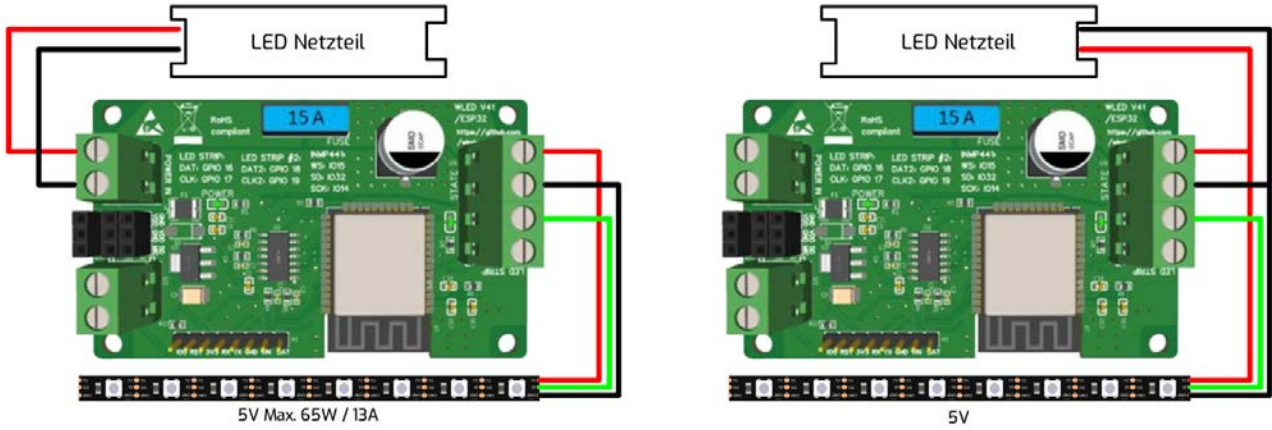
Line-In zu I2S Adapter

INMP441 Digitales Mikrofon

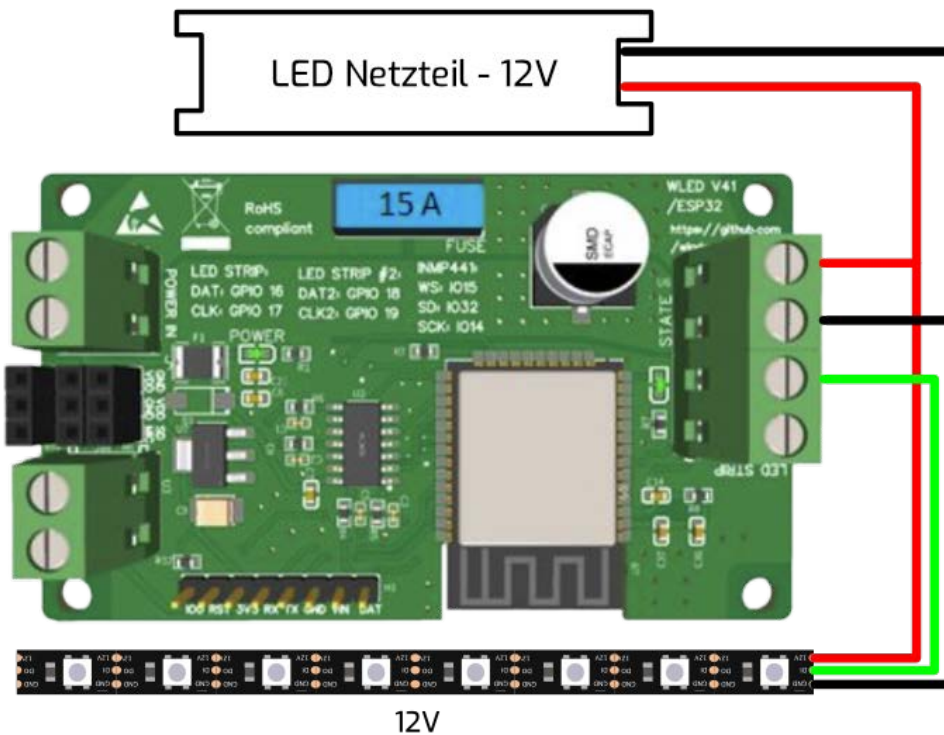


Zedfy WLED Controller - Anschlusspläne

5V LED Streifen



12V/24V LED Streifen anschließen



Zedfy WLED Controller - Ausgänge + Einstellungen



LED Einstellungen - WLED Controller Einstellungen

A screenshot of the WLED 'Hardware setup' menu. The menu is titled 'Hardware setup' and lists four LED outputs. Each output is configured with a specific WS281x LED type, color order (GRB), start and length values, and a GPIO pin. Blue arrows point from the labels 'LED 1', 'LED 2', 'LED 3', and 'LED 4' to their respective settings in the menu.

Output	LED Type	Color Order	Start	Length	GPIO	Reversed (rotated 180°)	Skip first LEDs	Off Refresh
LED 1	WS281x	GRB	0	30	16	<input type="checkbox"/>	0	<input type="checkbox"/>
LED 2	WS281x	GRB	30	30	12	<input type="checkbox"/>	0	<input type="checkbox"/>
LED 3	WS281x	GRB	60	30	18	<input type="checkbox"/>	0	<input type="checkbox"/>
LED 4	WS281x	GRB	90	30	13	<input type="checkbox"/>	0	<input type="checkbox"/>

Zedfy WLED Controller - Mikro



Mikrofon Einstellungen - WLED Controller Einstellungen

Back Save

Sound Input Settings

Squelch: 10
Gain: 40

Gain=40 means an amplification of 1; 1 is about 1/12, 255 is about 6.5
To tune, set input level slider to middle/128, start with Squelch=5..10 and Gain=40 and modify according to your setup

Automatic Gain Control (AGC): Normal ▾
If AGC is enabled, the input slider (🔊) will automatically be adjusted

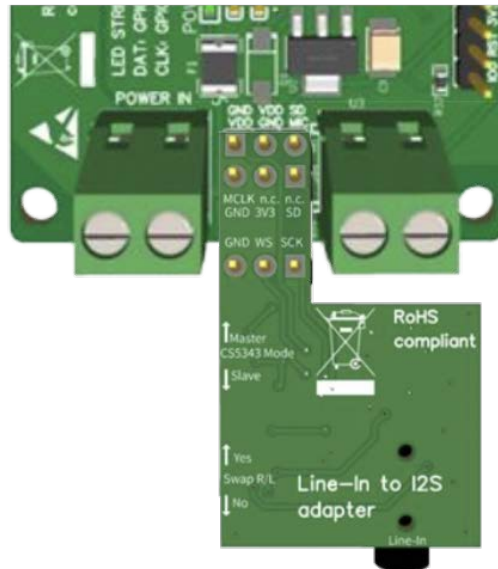
Sound Input Pin Manager

Microphone type: Generic I2S ▾
I2S SD pin: 32
I2S WS pin: 15
I2S SCK pin: 14

Changing the microphone type or pins requires a hard reset/power cycle

Back Save

Zedfy WLED Controller - Klinke



Klinken Einstellungen - WLED Controller Einstellungen

Sound Input Settings

Squelch: 10

Gain: 200

Gain=40 means an amplification of 1; 1 is about 1/12, 255 is about 6.5

To tune, set input level slider to middle/128, start with Squelch=5..10 and Gain=40 and modify according to your setup

Automatic Gain Control (AGC): Normal ▾

If AGC is enabled, the input slider () will automatically be adjusted

Sound Input Pin Manager

Microphone type: Generic I2S with Mclk ▾

I2S SD pin: 32

I2S WS pin: 15

I2S SCK pin: 14

Changing the microphone type or pins requires a hard reset/power cycle

Back Save